



  
**DEDANI**

Collection

Look Book

*Autumn | Winter 2020*



## *Dedani Collection AW2020*

Dedani means 'Get out of the way or create space for all'. We pride ourselves for our contribution to sustainable fashion using natural fibres whilst creating opportunities for communal farmers and women cooperatives.

Style Code: SH25

AFI AFRICAN FASHION INTERNATIONAL



*Cashmere and Wool sustainably sourced & produced in the Eastern Cape, South Africa*

The Dedani Collection - *Metamorphosis Range* - celebrates five years of Cashmere Commercial Production from South Africa's indigenous goats. The Range is produced at the Ivili Loboya vertically-integrated wool and cashmere processing factory at Ibika Village, Butterworth, Eastern Cape Province of South Africa. This is Africa's first Cashmere Commercial Producer with top of the range machinery. Our founder, Dr Vuyo Mahlati is a social entrepreneur passionate about rural value chains for inclusive growth.



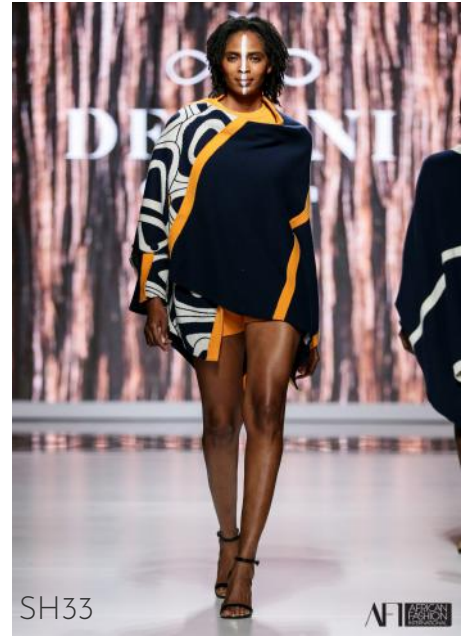
SH57

## *Metamorphosis Range*

Dedani Collection-*Metamorphosis* is primarily made of wool and cashmere blends. It is a spectacle of ethno-modern designs with bright warm colors.

SH51

# *Shawls*





SH55  
SH53

NE



SH51  
SH47



# DEDANI

Collection



SH33

SH25



Dedani Collection designs are inspired by poetry written by the founder, which the creative team translates into timeless classic designs.



*Capes*





SH56



SH29  
SH47



SH43  
SH47



SH58



SH59



SH60



The *Metamorphosis* designs capture the creative transformation of eggs to larva, caterpillar and the butterfly. To the Ivili Loboya team, this captures the journey of a start-up in rural Eastern Cape.



# *Tops & Skirts*



SH35  
SH30



SH22  
SH23



SH21  
SH19





SH22  
SH23



SH36

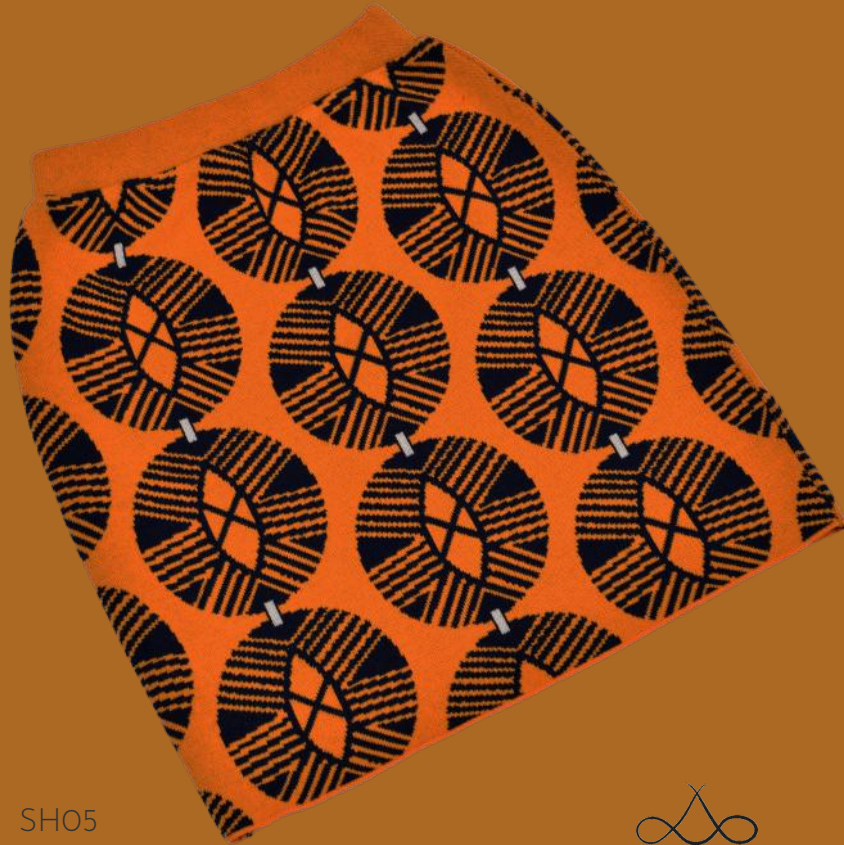


SH53

  
**DEDANI**  
Collection



SH04



SH05

  
**DEDANI**  
Collection



AFT



SH11



SH37

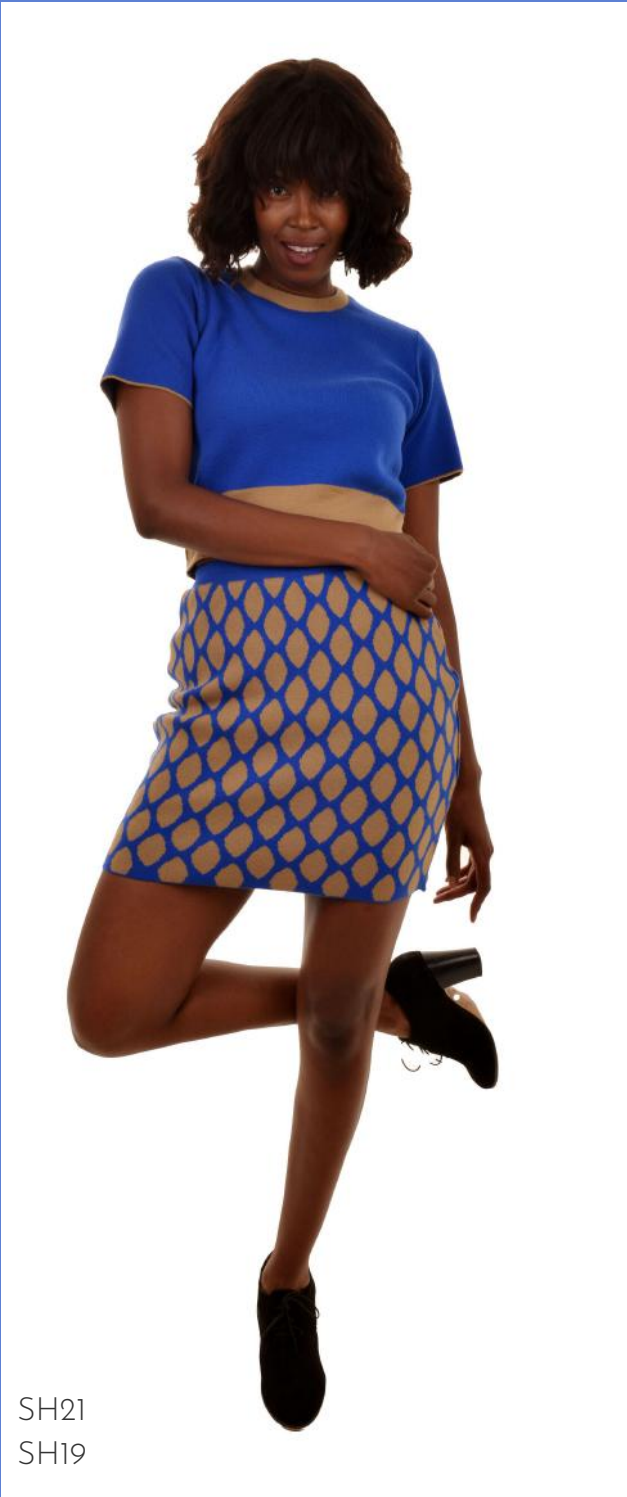
  
**DEDANI**  
Collection



The Dedani Collection's proudly South African luxury fabrics and apparel ranges are made from hand- and machine-spun yarns, as well as hand-woven and machine- knitted innovative techniques.

SH32  
SH38

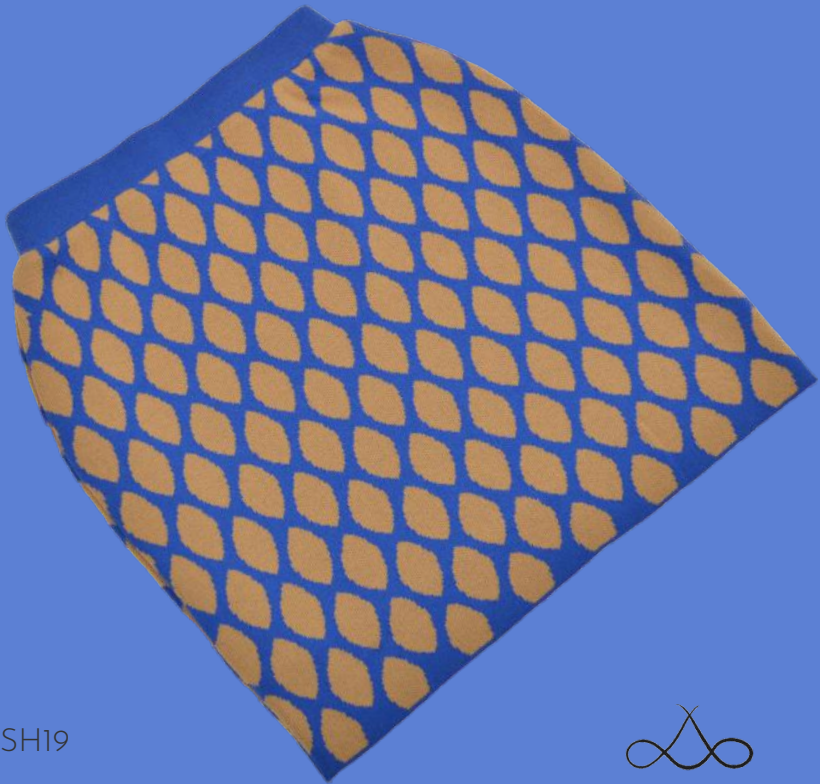




SH21  
SH19



SH09



SH19

  
**DEDANI**  
Collection



SH12  
SH07



SH12



SH01

  
**DEDANI**  
Collection



SH35  
SH30



SH35



SH30

  
**DEDANI**  
Collection



# *Blankets*

SH61

Eco-dyes from natural sources such as leaves, fruits, bark and flowers have been used to create the collection's palette of warm, earthy tones. These include ochre, bone, nut, marula, wild peach and pitch.





The value chain players in the production of Dedani Collection are predominantly women. This includes employees, farmers, co-creating co-operatives, such as handspinners, weavers and those in hand embroidery.

SH41

*Dresses*



SH08



SH49



SH14



At Dedani, we embrace our surroundings, incorporating both history and tradition with a modern aesthetic in our designs. Our capes, ponchos, rugs and pillows are inspired by our African origins. Our collections combine handcrafting and modern-day technology.

SH20  
SH44

# *Scarves & Shorts*





SH27



SH28





SH39  
SH46

AFI  
A  
F  
I  
N  
T

SH39



SH40





SH20  
SH44

AFTI AFRICAN FASHION INTERNATIONAL

SH34



SH20





# *Headscarves & Masks*

100% Cotton/Breathable/Washable/Durable



## DEDANI

Collection





Follow us! @dedanicolecion  
www.dedanicollection.com  
sales@dedanicollection.com  
+27 83 332 8319



SH61

AFI AFRICA FASHION INTERNATIONAL